



ANOKA-HENNEPIN
SCHOOLS
A future without limit

Request for Bids
#26002B
Addendum 1
Snow Plowing & Removal
Regions 6, 7, 8

Due by:
Wednesday, June 18, 2025
2:00 p.m. Local Time

Anoka-Hennepin Schools
Purchasing Department
2727 N Ferry St. Anoka, MN 55303
763-506-1300
purchquotes@ahschools.us

This Addendum forms a part of the Request for Bid (RFB) documents for the above-referenced project and modifies the original documents as follows. All provisions of the original RFB not specifically modified by this Addendum remain unchanged.

1. Addition of Region 7

Region 7 has been added to the scope of services. Region 7 includes the following sites, totaling approximately 163,033 square feet:

Two Rivers at Franklin
215 West Main Street, Anoka, MN 55303 – 60,960 SF

Lincoln Elementary
540 South Street, Anoka, MN 55303 – 67,484 SF

Sandburg Education Center
1902 Second Avenue N, Anoka, MN 55303 – 25,274 SF

Verndale Center
2829 Verndale Avenue, Anoka, MN 55303 – 9,315 SF

A revised bid form has been issued and must be used to submit a response. Vendors may choose to submit a bid for any or all regions (6, 7, and/or 8). Bids for Region 7 will be evaluated using historical snowfall data from the 2019–2020 season to determine the lowest responsible bidder.

2. Revision to Maximum Awardable Square Footage

The District reserves the right to limit the maximum square footage awarded per contracted vendor. The prior limit of 2.5 million square feet has been increased to **3 million square feet**. Vendors may submit bids and be awarded multiple regional contracts, provided that the total square footage awarded does not exceed 3 million square feet.

PART 3: REVISED BID FORM

This section of the bid must not contain any erasures, corrections, or white-out. Failure to comply may result in the response being rejected.

3.01 BID PRICING

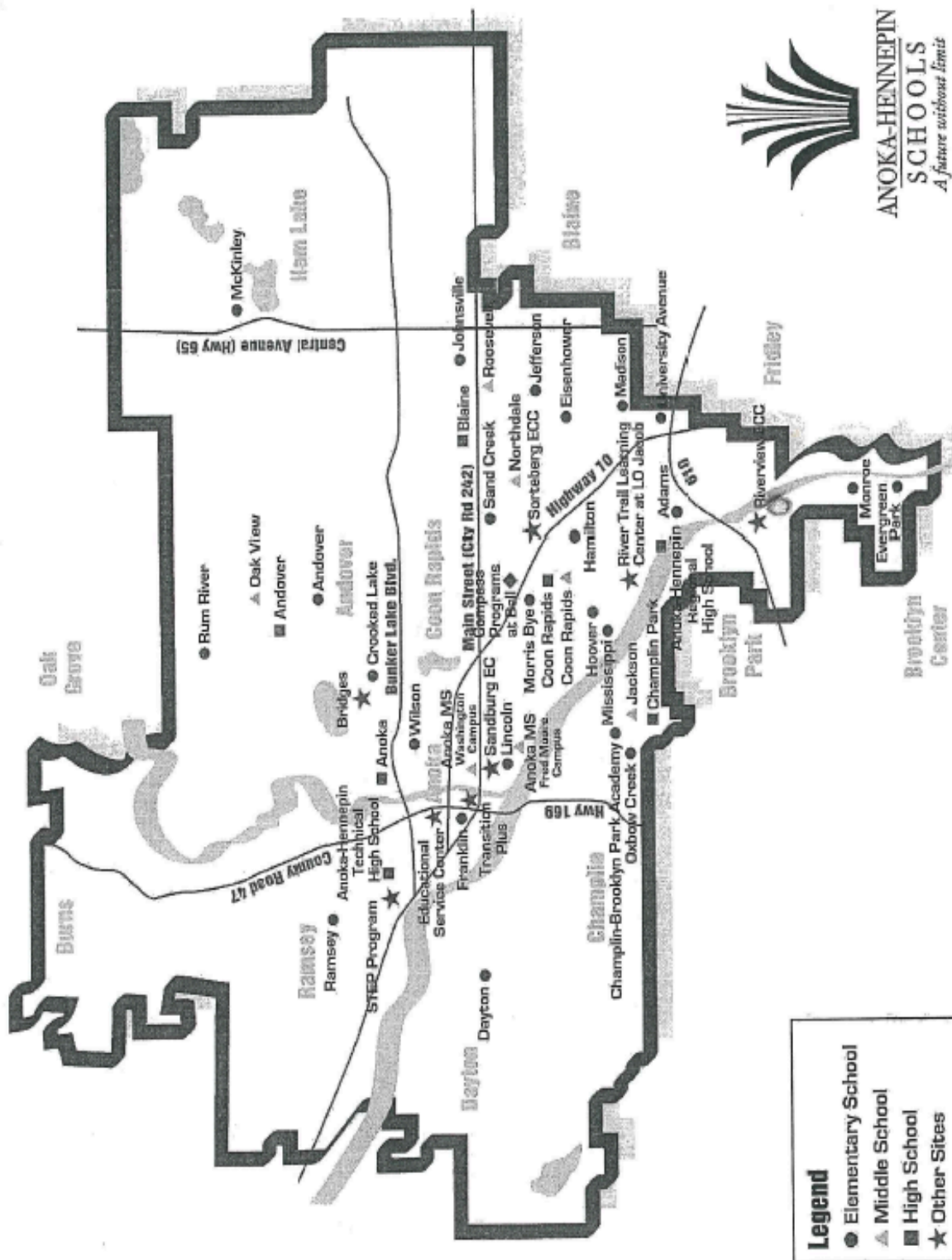
Region 6		
Line #	Service Description	2025-26 Pricing
1	Snow Event: 1.5" to 4"	\$
2	Snow Event: 4.1" to 6"	\$
3	Snow Event: 6.1" to 8"	\$
4	Annual Minimum Compensation Guarantee	Line 1 x 3 =\$ _____
5	Plowing of driveways ONLY while school is in session.	\$
6	Drift Event – Hourly rate plus equipment cost	\$
7	On site snow blowing - Hourly labor rate and equipment rate	\$
Region 7		
Line #	Service Description	2025-26 Pricing
1	Snow Event: 1.5" to 4"	\$
2	Snow Event: 4.1" to 6"	\$
3	Snow Event: 6.1" to 8"	\$
4	Annual Minimum Compensation Guarantee	Line 1 x 3 =\$ _____
5	Plowing of driveways ONLY while school is in session.	\$
6	Drift Event – Hourly rate plus equipment cost	\$
7	On site snow blowing - Hourly labor rate and equipment rate	\$
Region 8		
Line #	Service Description	2025-26 Pricing
1	Snow Event: 1.5" to 4"	\$
2	Snow Event: 4.1" to 6"	\$
3	Snow Event: 6.1" to 8"	\$
4	Annual Minimum Compensation Guarantee	Line 1 x 3 =\$ _____
5	Plowing of driveways ONLY while school is in session.	\$
6	Drift Event – Hourly rate plus equipment cost	\$
7	On site snow blowing - Hourly labor rate and equipment rate	\$

ATTACHMENT B – SITES

Buildings	Square Footage
Coon Rapids High School 2340 Northdale Blvd NW Coon Rapids 55433	223,630
Coon Rapids Middle School 11600 Raven St. NW Coon Rapids 55433	223,630
Morris Bye Elementary 11931 Crooked Lake Blvd NW Coon Rapids 55433	54,170
	501,430
REGION 6	Total

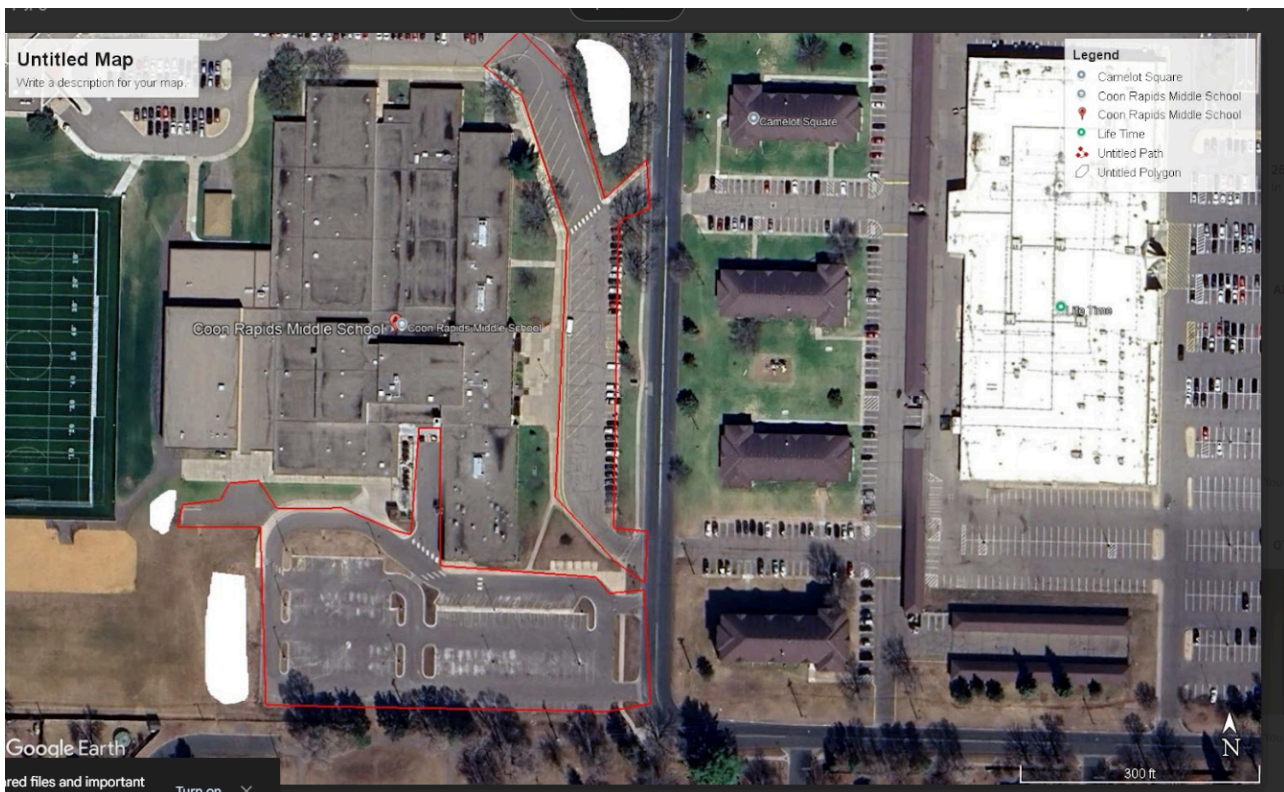
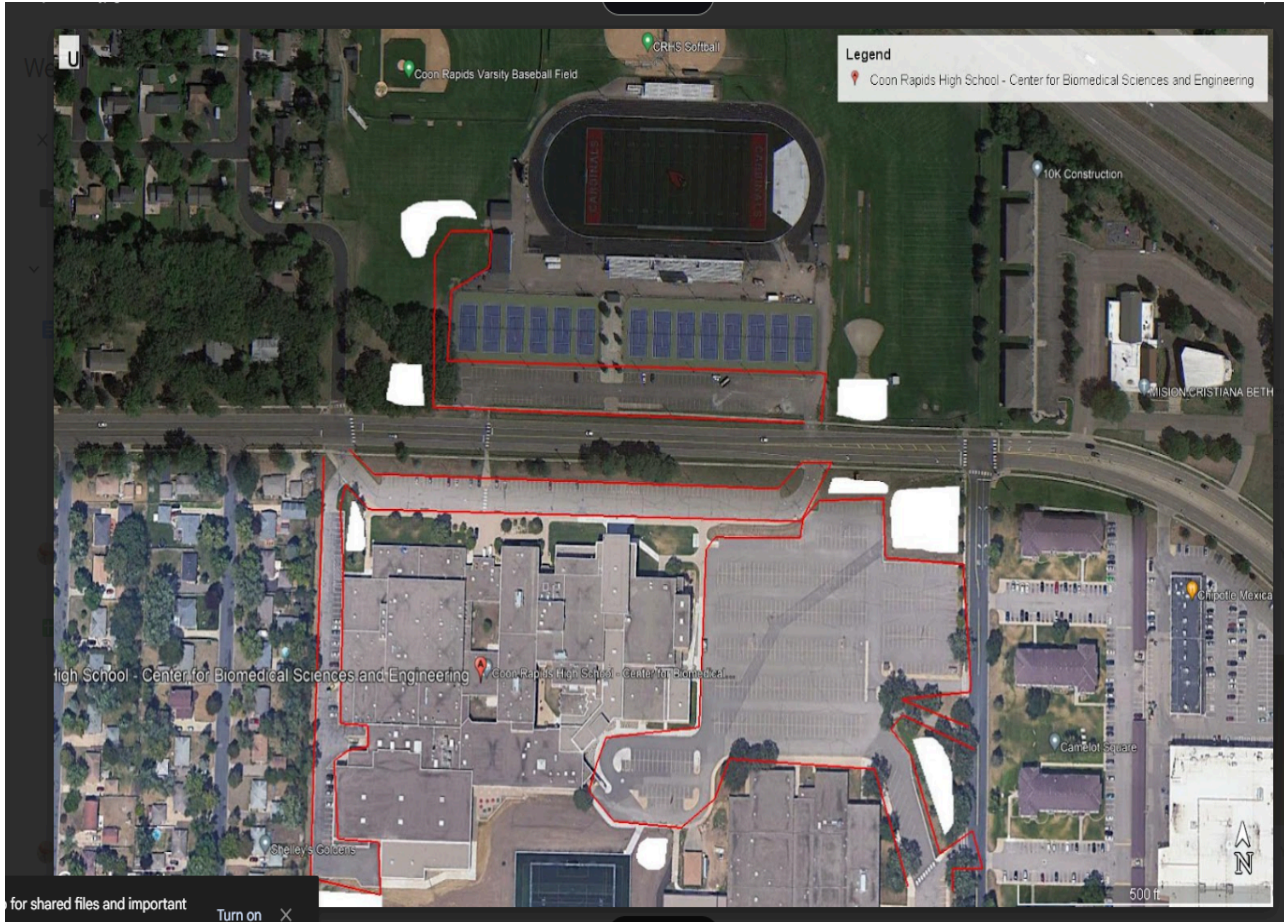
Buildings	Square Footage
Champlin Park High School 6025 109th Ave N Champlin, MN 55316	516,827
Champlin Brooklyn Park Academy 6100 109th Ave N, K-2 Dock Champlin, MN 55316	175,784
Jackson Middle School 6000 109th Ave N Champlin, MN 55316	175,784
Oxbow Creek Elementary School 6505 109th Ave N Champlin, MN 55316	185,072
Dayton Elementary School 12060 S Diamond Lake Dayton, MN 55327	69,405
	1,122,872
REGION 8	Total

Buildings	Square Footage
Two Rivers at Franklin 215 West Main Street Anoka., MN 55303	60,960
Lincoln Elementary 540 South Street Anoka, MN 55303	67,484
Sandburg Education Center 1902 Second Avenue N Anoka, MN 55303	25,274
Verndale Center 2829 Verndale Ave Anoka, MN 55303	9,315
	163,033
REGION 7	TOTAL



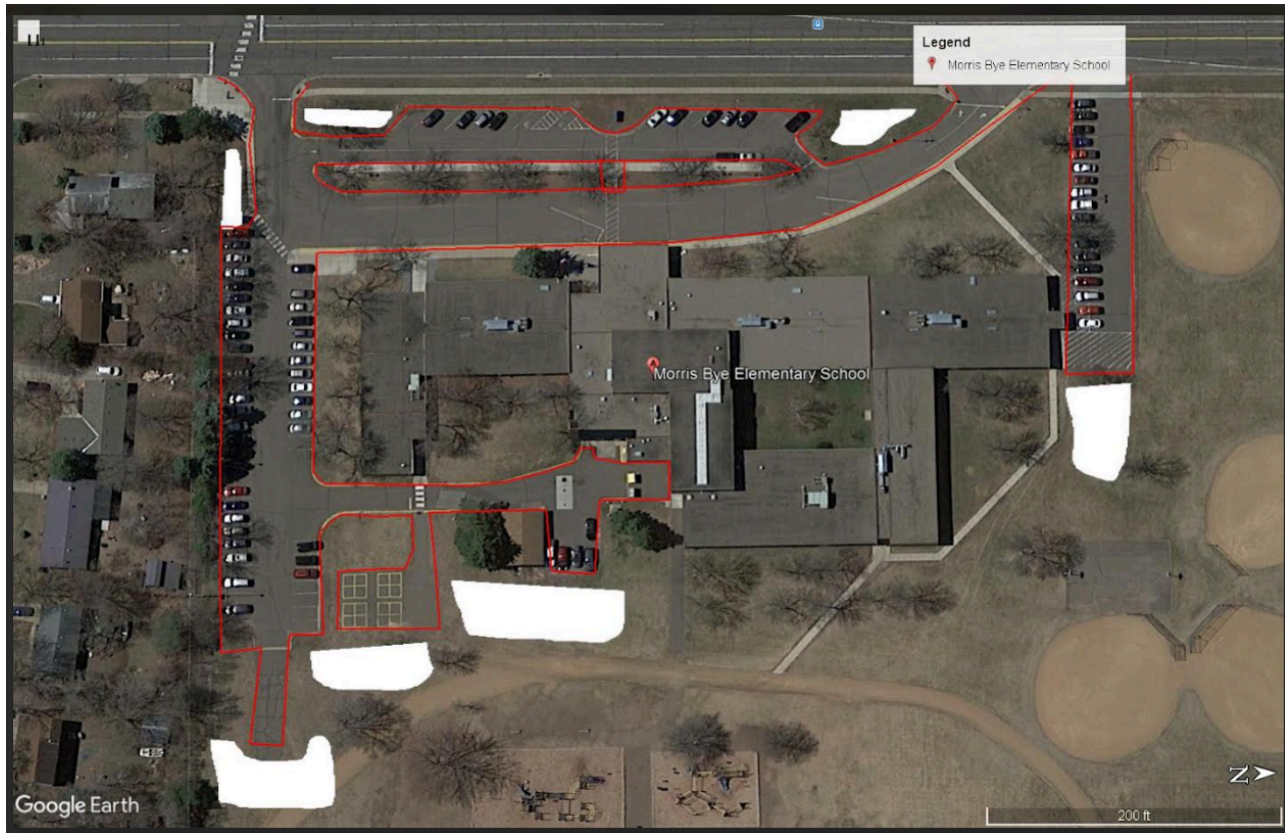
E. SNOW POINTS

Region 6-Coon Rapids High School, Coon Rapids Middle School



E. SNOW MAP POINTS

Region 6- Morris Bye ES

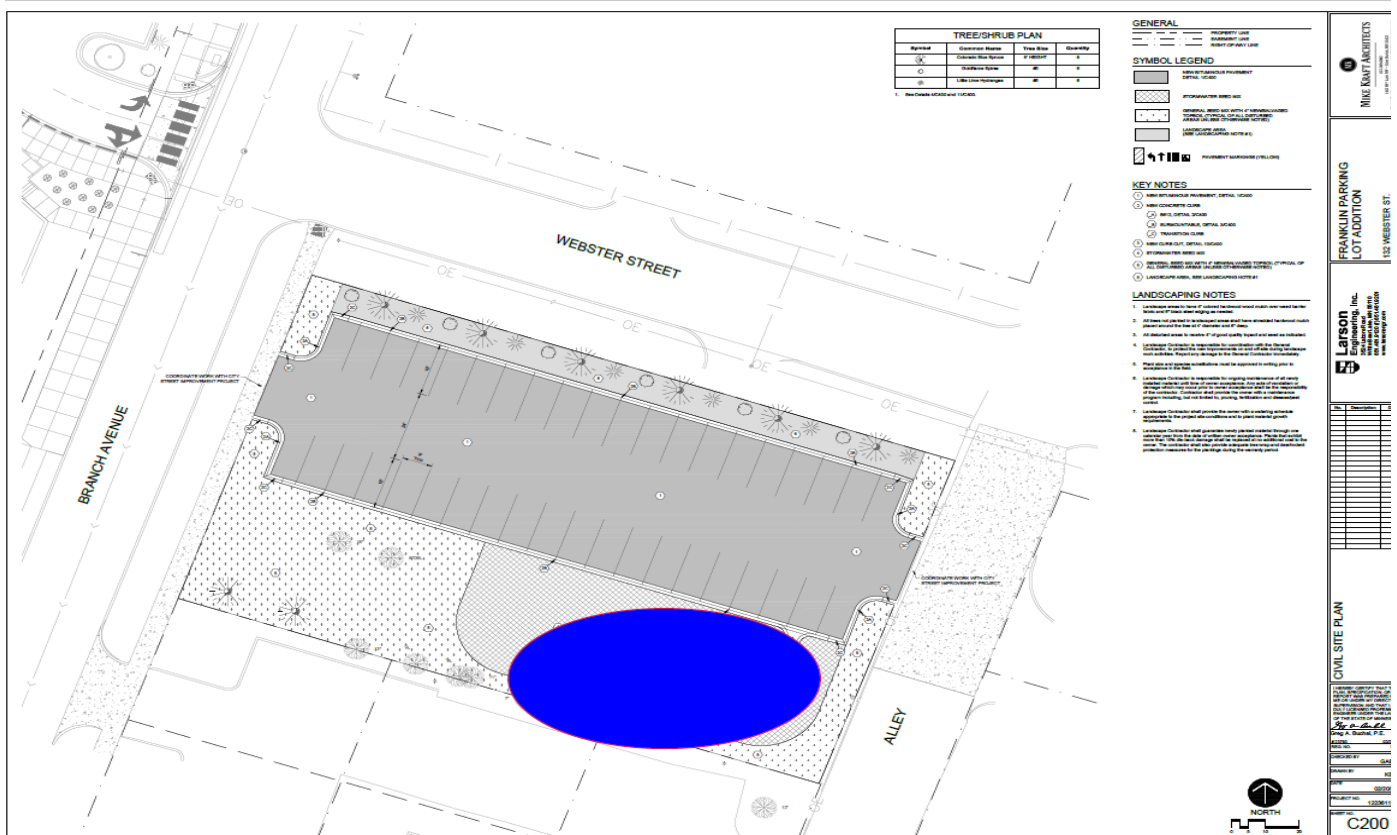


Region #7 - Lincoln Elementary School

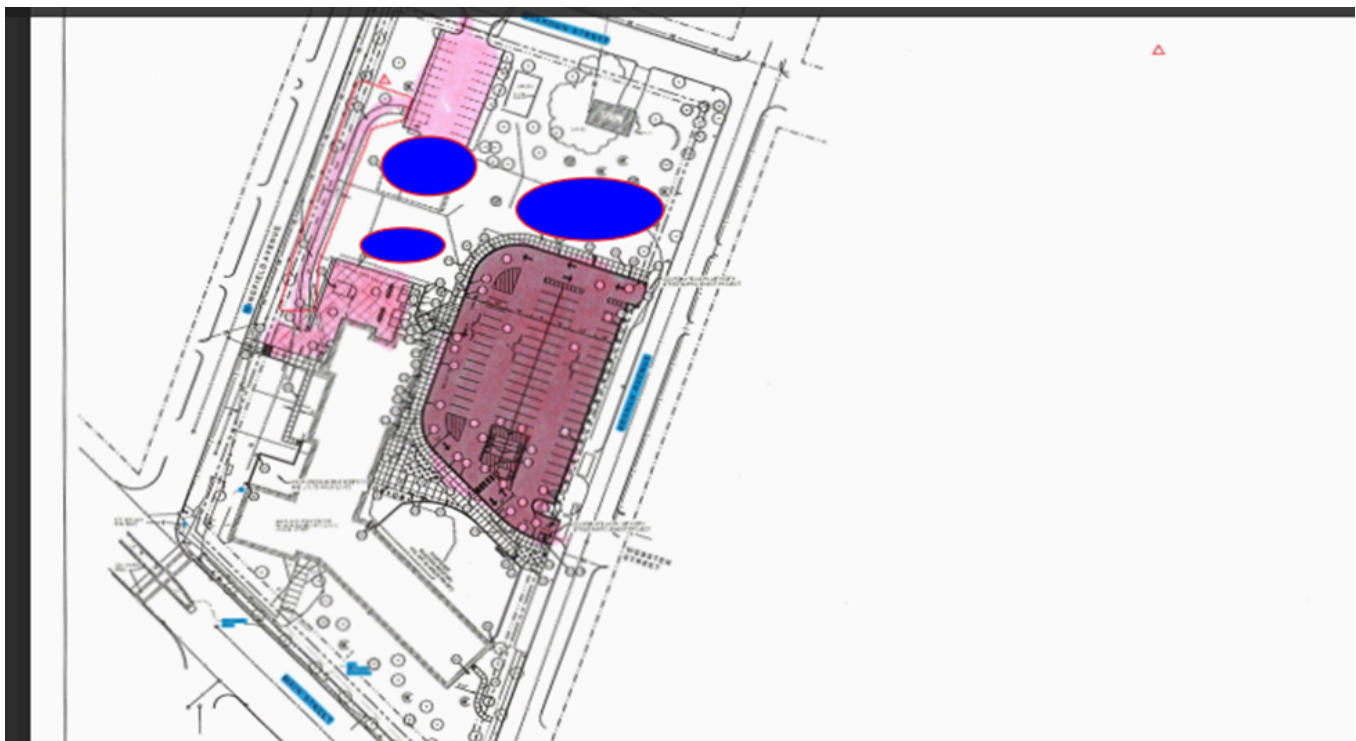


E. SNOW MAP POINTS

Region #7 - Two Rivers Transition Program at Franklin parking lot 1



Two Rivers Transition Program at Franklin Parking lot 2



Region #7 (Continued)

Sandburg Regional High School

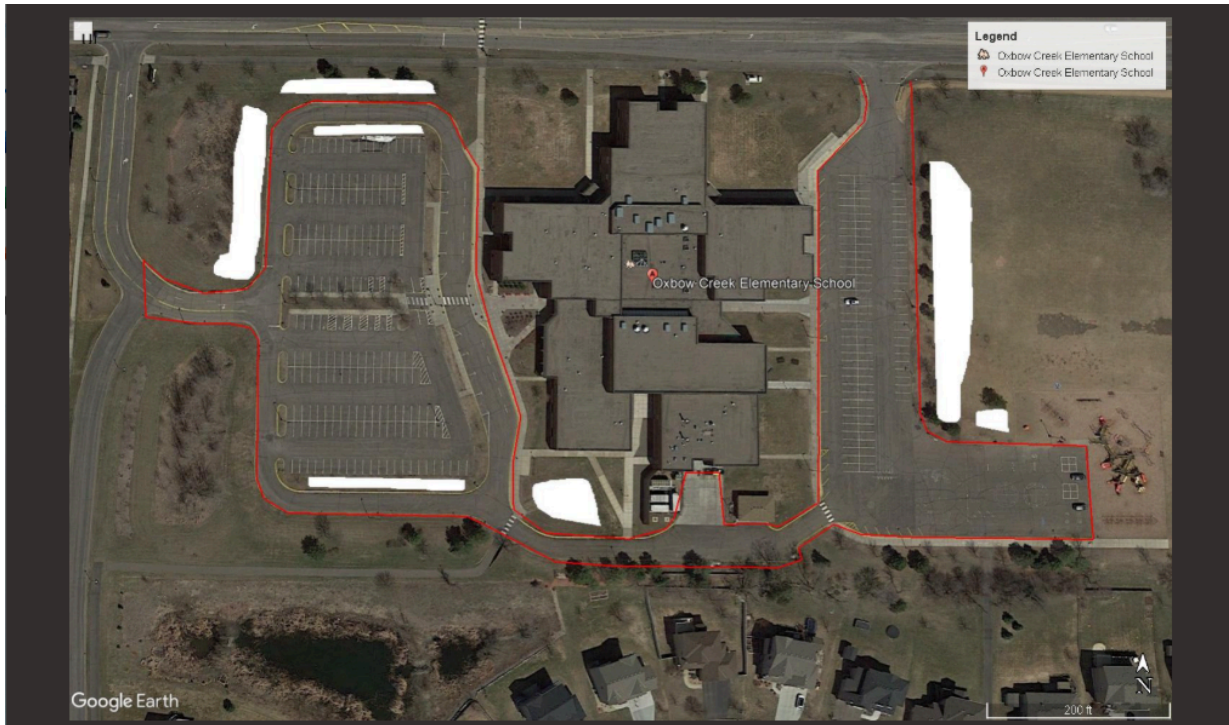


Verndale Education Center



E. SNOW MAP POINTS

Region 8 : Oxbow Creek ES



Dayton ES



E. SNOW MAP POINTS

Region 8 - CPBA Site



Jackson Middle School



E. SNOW MAP POINTS

Region 8 - Champlin Park High School

